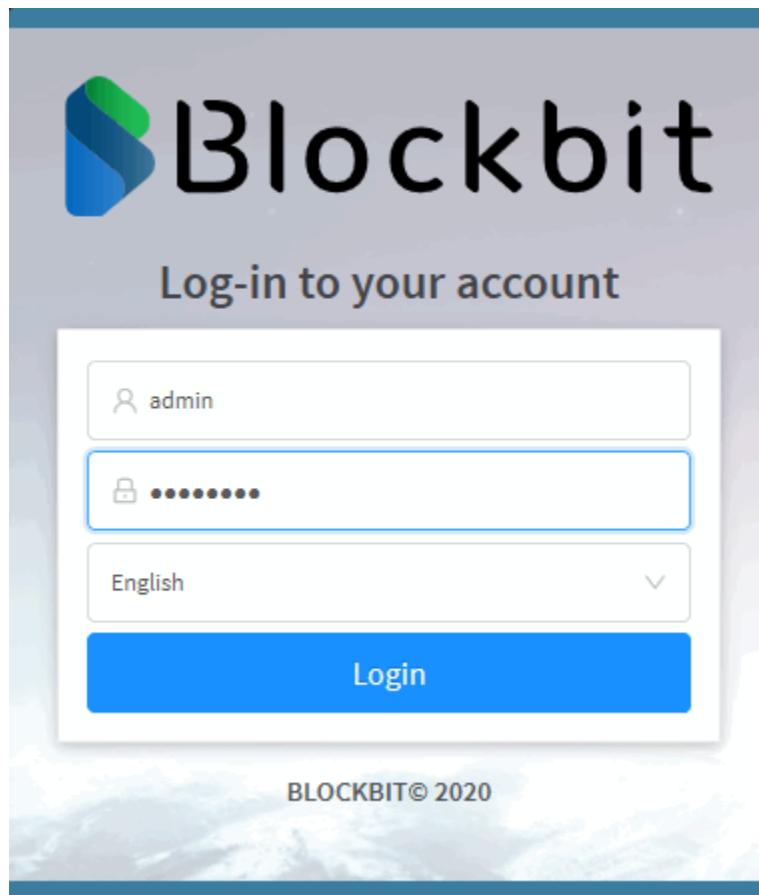


Import and Export 1.5 to 2.0 - Accessing Web interface

Use one of the [recommended browsers](#).

1. Connect to the internet and access the address: <https://172.16.102.136:98>. If you have changed the IP address, use the changed IP;
2. Access using the following data:

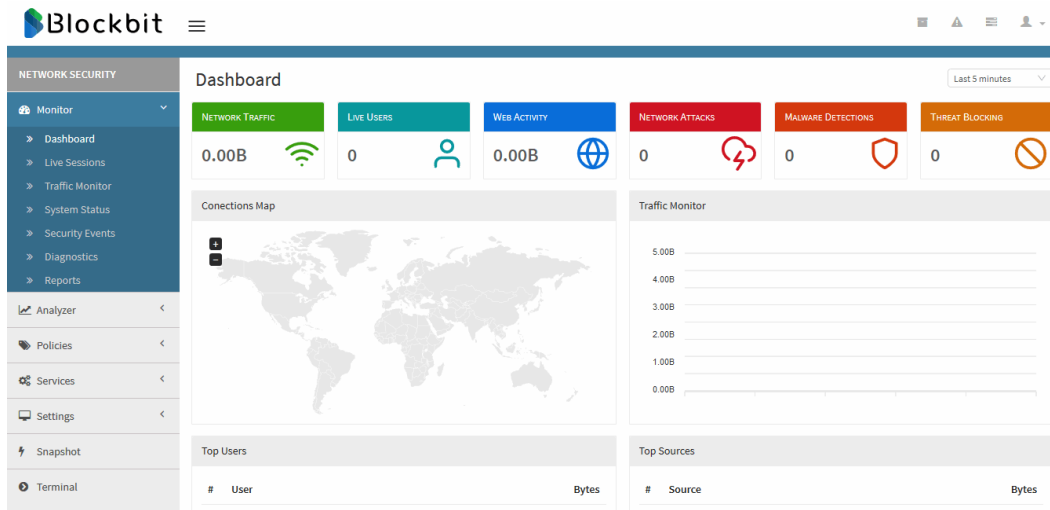
- **User:** The registered user's login, moreover, if the email has been registered, it is possible to use it to login. Ex.: admin;
- **Password:** Registered password;
- **English:** The desired language is defined to access the Web Interface. The language can be English or Portuguese. Ex.: *English*.



Login Screen - Blockbit UTM

- Click the [Login](#) button to access the Web Interface.

The main screen of the Blockbit UTM will be displayed: The Dashboard.



Blockbit UTM main screen - Dashboards

Finally, we'll demonstrate how to [license](#).